



ONE CARIBBEAN ESTATES

Wimba

Browne's Gap, Bridgetown, Christ Church Barbados

US\$ 427,500



Description

One Caribbean Estates proudly presents for sale Wimba, a new condominium on Barbados' South Coast. This exclusive mid-rise condo development offers only eight residences, ensuring a boutique living experience in the sought-after, idyllic South Coast of Barbados. **Features:** Step inside Wimba, and youâ€™ll discover beautifully designed contemporary living spaces with a lot of character. Individuality, style, and quality are the hallmarks of these eight fully air-conditioned condominiums, featuring attractive designs and premium finishes. Each condominium includes two bedrooms, two bathrooms, a modern kitchen, and an open living area perfect for entertaining and relaxing. The gated property offers several amenities, including a swimming pool and assigned parking, ensuring convenience and comfort for residents. This new condominium on Barbados' South Coast is not just a residence; it's a great investment with high-yield rental potential, providing owners with an excellent return on investment. The residences at Wimba boast bespoke kitchens, designed with both functionality and style in mind, equipped with low-energy appliances that come with a one-year guarantee package. Every condominium is illuminated with energy-efficient LED lights and features ceiling fans and an inverter AC system for optimal comfort. Residents will enjoy the convenience of assigned parking spaces, while the interiors are enhanced by top-quality porcelain plank tiles and bathrooms fitted with luxurious rainfall showers. The property is surrounded by beautifully landscaped gardens and offers a communal pool for leisure and relaxation. Elevator access ensures ease of movement within the building, and a gated secured entrance provides peace of mind for all residents. **Location:** Situated on Barbadosâ€™ idyllic South Coast, Wimba is perfectly positioned to offer the best of island living. The pristine waters of Hastings and Accra beaches are just a few steps away, providing endless opportunities for beachside relaxation and water activities. The vibrant local area boasts an array of restaurants, duty-free shopping, local shops, museums, 18th-century landmarks, and nightlife, all within a 10-minute drive of your condo. Thank you for exploring this luxury Barbados property listed on One Caribbean Estates. One Caribbean Estates is the leading Barbados real estate firm serving the niche luxury

property market along the island's famed West Coast and in other key areas across this beautiful Caribbean island. Browsing our portfolio of luxury Barbados properties, you will find beachfront villas, modern condominiums, and stunning homes within the Sandy Lane Estate, Port St. Charles Marina, Canouan Estate Resort & Villas, Sugar Hill Tennis Resort, Royal Westmoreland Golf Community, and more.

Details

Bedrooms: 2

Property Type: Gated Community, Condominium

Bathrooms: 2

Property Status: For Sale

Features

⊗ [Air Conditioning](#)

⊗ [Assigned Parking](#)

⊗ [Landscaped Gardens](#)

⊗ [Communal Pool](#)

⊗ [Excellent Rental Potential](#)

⊗ [Gated Development](#)

⊗ [Appliances Only](#)

⊗ [10 minutes to South Coast amenities](#)

⊗ [Steps from the beach](#)

Gallery



GROUND FLOOR

Unit 1
 INTERIOR AREA
 1004 SF
 EXTERIOR AREA
 240 SF



FIRST FLOOR

Unit 2
 INTERIOR AREA
 1026 SF
 EXTERIOR AREA
 302 SF

Unit 3
 INTERIOR AREA
 1026 SF

Unit 4
 INTERIOR AREA
 1026 SF



Specifications are provided as a general guide to prospective purchasers and do not constitute an offer or contract.

SECOND FLOOR

Unit 5
 INTERIOR AREA
 1026 SF



THIRD FLOOR

Unit 6
 INTERIOR AREA
 1026 SF

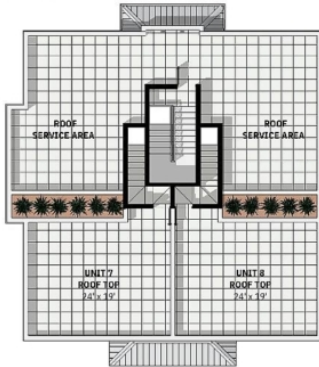
Unit 7
 INTERIOR AREA
 1026 SF
 EXTERIOR AREA
 200 SF

Unit 8
 INTERIOR AREA
 1026 SF
 EXTERIOR AREA
 200 SF



Specifications are provided as a general guide to prospective purchasers and do not constitute an offer or contract.

FOURTH FLOOR (ROOF DECK)



ONE CARIBBEAN ESTATES

Leading REAL ESTATE
COMPANIES
OF THE WORLD™

LP LUXURY
PORTFOLIO
INTERNATIONAL®